



# CITY MANAGER COMMENTS FIRE HAZARD SEVERITY ZONES

CITY COUNCIL

MARCH 25, 2025

ADAM RAYMOND, CITY MANAGER



## BACKGROUND

### ➤ **CalFire is responsible for identifying fire hazard zones**

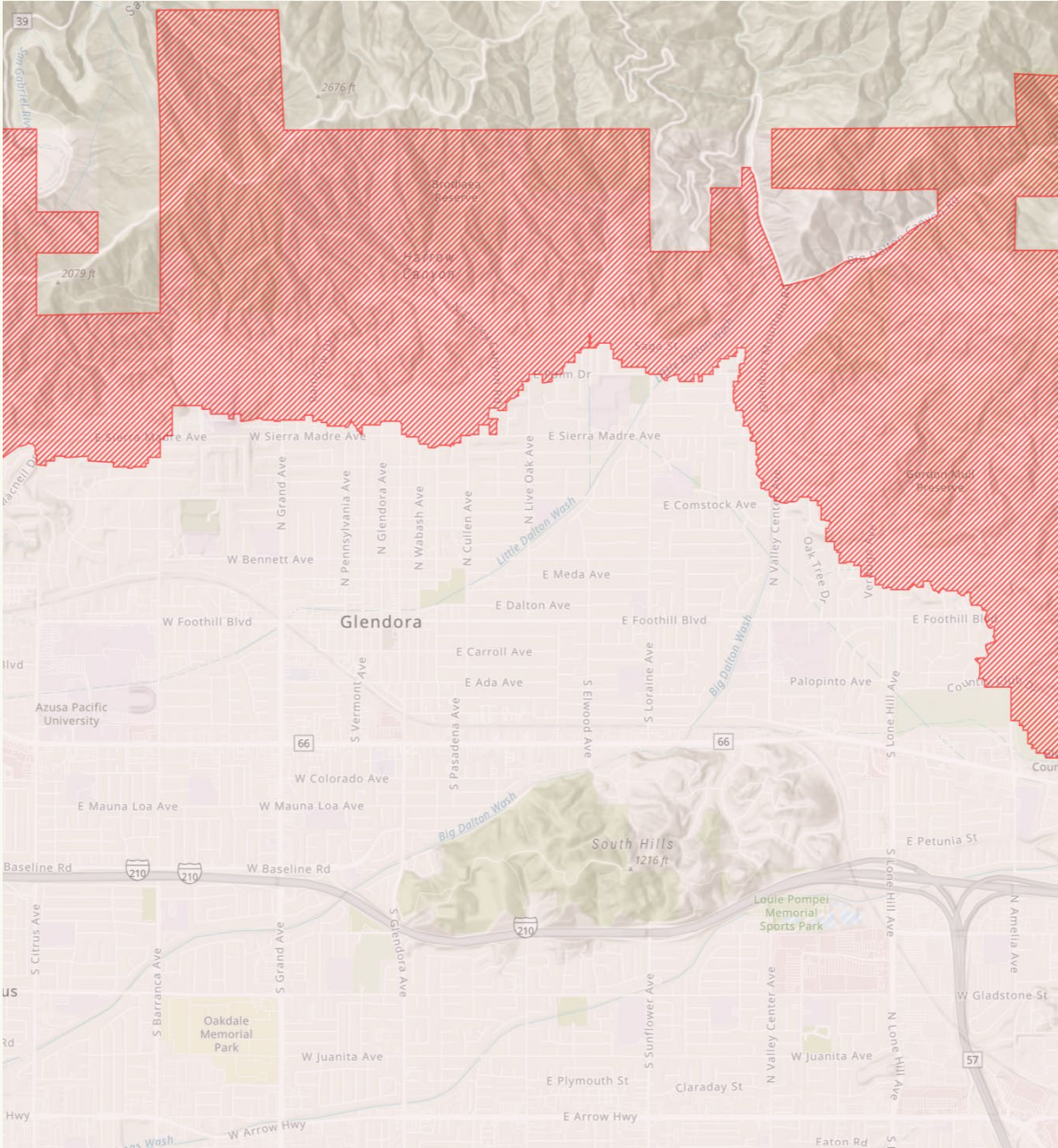
#### **Government Code 51178**

*The State Fire Marshal shall identify areas in the state as moderate, high, and very high fire hazard severity zones based on consistent statewide criteria and based on the severity of fire hazard that is expected to prevail in those areas. Moderate, high, and very high fire hazard severity zones shall be based on fuel loading, slope, fire weather, and other relevant factors including areas where winds have been identified by the Office of the State Fire Marshal as a major cause of wildfire spread.*

## BACKGROUND

- **Last major update to fire hazard severity zone map was in 2011**
  - 4,045 acres designated very high
  
- **March 24, 2025 – updated maps include very high, high and moderate fire hazard severity zones**
  - 5,149 acres designated very high
  - 578 acres designated high
  - 555 acres designated moderate
  - 27.3% increase in very high
  - 55% increase overall
  - Biggest change is South Hills

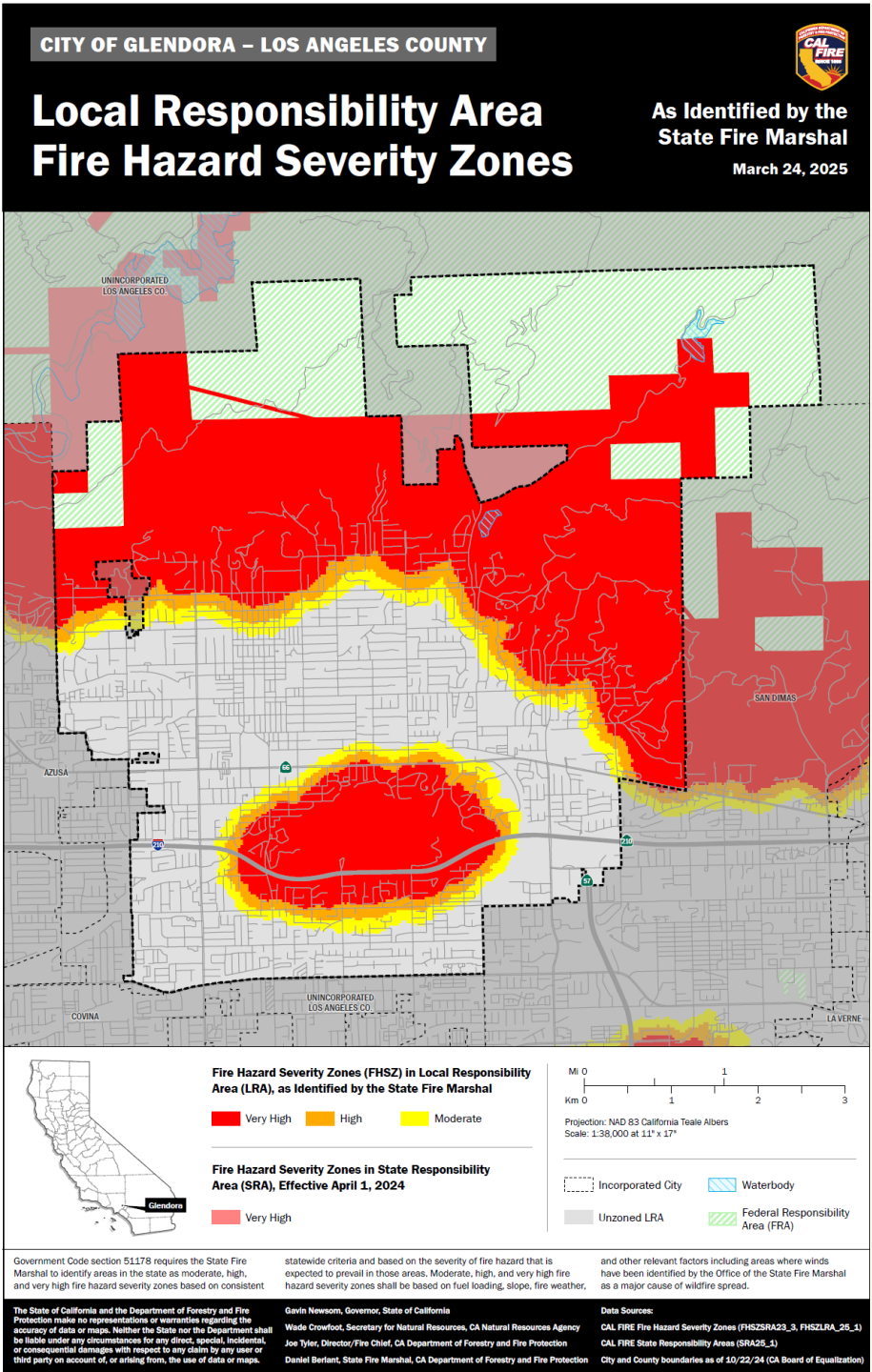
# 2011 FIRE HAZARD SEVERITY ZONES



# MARCH 2025 FIRE HAZARD SEVERITY ZONES



MARCH 2025 FIRE  
HAZARD SEVERITY  
ZONES



## NEW MAP IMPACTS

### ➤ **City has 120 days to adopt new maps via ordinance**

- May increase the areas but not decrease

### ➤ **Impacts to property owners**

- Defensible space of 100 feet (0-5, 5-30, 30-100)
- Adherence to Wildland-Urban Interface (WUI) building codes for new construction and renovations.

### ➤ **LA County Fire will send defensible space inspection notices to impacted properties in February 2026**

- Current notices went out in February 2025

## NEW MAP IMPACTS

- **City will include new maps in the General Plan Public Safety Element and Local Hazard Mitigation Plans**
- **“CAL FIRE’s maps are intended to drive local planning decisions, not insurance decisions.”**
  - Ricardo Lara, Insurance Commissioner

### ➤ **FAQs**

- [https://34c031f8-c9fd-4018-8c5a-4159cdff6b0d-cdn-endpoint.azureedge.net/-/media/osfm-website/what-we-do/community-wildfire-preparedness-and-mitigation/fire-hazard-severity-zones/2024-fhsz-faqs\\_english.pdf?rev=538374a27bb44bbab4c2786ff2eafb39&hash=AD4DB7857E3EF6F0BEC0B56429A1C262](https://34c031f8-c9fd-4018-8c5a-4159cdff6b0d-cdn-endpoint.azureedge.net/-/media/osfm-website/what-we-do/community-wildfire-preparedness-and-mitigation/fire-hazard-severity-zones/2024-fhsz-faqs_english.pdf?rev=538374a27bb44bbab4c2786ff2eafb39&hash=AD4DB7857E3EF6F0BEC0B56429A1C262)

### ➤ **Insurance FAQs**

- <https://calfire.app.box.com/s/nebu1b1hu9m9kef8v7wxwehhlkzrfebv>

### ➤ **Map**

- <https://experience.arcgis.com/experience/5065c998b4b0462f9ec3c6c226c610a9/page/Compare-old-and-new-LRA-FHSZ>



THANK YOU