

**Fire Alarm Notes:**

- The Fire Alarm System shall conform to Article 760 of the California Electrical Code.
- Upon Completion of the installation of the Fire alarm System, a satisfactory test of the entire system shall be made in the presence of the Authority Having Jurisdiction.
- A stamped set of approved Fire Alarm plans shall be on the job site and used for installation. Any deviation from approved plans, including the substitution of devices, shall be approved by the Fire Marshall.
- Any discrepancies between the drawings and the code, or recognized standards shall be brought to the attention of the inspector of record.
- All devices of the Fire Alarm System shall be approved and listed by the California State Fire Marshall.
- A certificate of completion shall be prepared by the installer and given to the Fire Marshall upon completion of the installation.
- Consult installer prior to making any modifications to the system wiring.
- Fire Alarm drawings are schematic in nature only. Contractor to route conduit as field conditions indicate.
- Upon the certificate of completion, the installer shall supply the owner with written operating, testing and maintenance instructions, point-to-point as built drawings, and equipment specifications.
- 120V AC 60 Hz input power for Fire Alarm controls shall be dedicated circuit Breaker labeled "Fire Alarm".
- Provide installer with one copy of "as built" drawings so that accurate documentation can be maintained.
- 120V AC is not permitted in some conduit with low voltage wiring.
- Do not apply power except in the presence of a factory-trained technical representative.
- Any smoke detector head installed before building is cleaned and accepted shall be covered to protect from dust. Any false alarms due to dirt contaminated heads shall be the responsibility of the electrical contractor.
- The location of the FACP and Annunciator Panel shall be approved by the Fire Department.
- Connect waterflow and tamper switches as required.
- Verify location of waterflow and tamper with the Fire Sprinkler contractor in the field.
- Locate junction boxes as required.
- FACP and other panels shall be mounted with clearances for observation and testing, and all Fire Alarm junction boxes shall be marked for identification.
- All wiring, initiating devices and annunciator panel shall be supervised to the principal point of annunciation (Fire Alarm panel to supervise the annunciator panel, all circuits and initiating devices).
- All Fire Alarm wiring must test free of opens, shorts and grounds.
- All contractor wiring must enter at the top and bottom right of the FACP.
- See installation manual for field wiring specifications for additional installation requirements.
- Primary phone line shall be dedicated.
- Fire Department will test and verify adequate audibility being provided throughout, particularly in open work areas and in testing areas.
- Pull stations shall be mounted at 48" above finished floor to center of box.
- Audible/Visual devices shall be mounted at a minimum of 80" measured to the bottom of the device, or 6" below ceiling whichever is lower.
- Fire Alarm devices are marked or identified as "WP" (weather proof) a special back box is required.
- First floor entrance is partially sprinklered with a water curtain.

# Glendora Library

140 South Glendora Ave.  
Glendora, CA 91741

- FA-01 Cover Sheet
- FA-02 First Floor Fire Alarm
- FA-03 Second Floor Fire Alarm
- FA-04 Panel and Device Details
- FA-05 Device Details and Coverage Area

Worst Case Voltage Drop Calculations									
Zone Number	SZ-3	AWG		Circ Mils		Volts		Fahrenheit	
Wire Gauge (AWG)	14	4110		Circ Mils		4110		Volts	
Voltage	24	0.00253		Ohms/ Foot		24		Centigrade	
Temperature	70	21.1		Centigrade					
Node Reference	Conductor Length (Feet)	Unit Amperes	Total Amperes	AWG Size	Circular Mils	Ohms Per Foot	Voltage Drop	Percent Drop	Cumulative % Drop
1	64	0.269	1.381	14	4110	0.00253	0.448	1.86%	1.86%
2	21	0.096	1.112	14	4110	0.00253	0.118	0.49%	2.36%
3	48	0.239	1.016	14	4110	0.00253	0.247	1.03%	3.39%
4	32	0.269	0.777	14	4110	0.00253	0.126	0.52%	3.91%
5	50	0.239	0.508	14	4110	0.00253	0.129	0.54%	4.45%
6	49	0.269	0.269	14	4110	0.00253	0.067	0.28%	4.73%
Totals	264	1.381	1.381				1.134	4.73%	4.73%
				Total Voltage Drop		1.134 Volts			
				Total Percentage Voltage Drop in Circuit		4.73% Percent			

Panel and Devices Battery Calculations For Fire-Lite FCPS-24							
Qty	Manufacturer	Model Number	Description	Standby Current	Total Standby	Alarm Current	Total Alarm
1	Fire-Lite	FCPS-24	Signal Zone Expander	0.0700	0.0700	0.1250	0.1250
2	Wheelock	DSM	Synchronization Module	0.0000	0.0000	0.0380	0.0760
5	Wheelock	SR-24110-CFW	Strobe, Ceiling Mount, 100 cd	0.0000	0.0000	0.2390	1.1950
4	Wheelock	AS-24110-CFW	Horn/Strobe, Ceiling Mount, 100 cd	0.0000	0.0000	0.2690	1.0760
1	Wheelock	AS-2475-CFW	Horn/Strobe, Ceiling Mount, 75 cd	0.0000	0.0000	0.2390	0.2390
2	Wheelock	AS-2475-VFR	Horn/Strobe, Wall Mount, 75 cd	0.0000	0.0000	0.2390	0.4780
2	Wheelock	AS-2415-VFR	Horn/Strobe, Wall Mount, 15 cd	0.0000	0.0000	0.0930	0.1860
6	Wheelock	SR-2415-VFR	Strobe, Wall Mount, 15 cd	0.0000	0.0000	0.0960	0.5760
Totals					0.0700		3.9510
Panel Voltage				24	60 Hours Standby	4.2000	
Battery Voltage				12	5 Minutes Alarm	0.3293	
Battery Capacity (Amp Hours)				7	Total Capacity Used	4.5293	
Number of Batteries Used				2	Battery Capacity	7.0000	
Total Battery Capacity (AH @ Panel Voltage)				7	Spare Capacity	35.3097	

Worksheet: BattCals - FCPSWS

Symbol Table							
Total	Symbol	Manufacturer	Model	Description	CFM	Backbox	Mounting Height
1	[FACP]	Fire-Lite	MS9200	Fire Alarm Control Panel	7165-0075:158	N/A	Top of box below 6'-3"
1	[UDACT]	Fire-Lite	UDACT	Communicator	7300-0075:174	N/A	N/A
1	[FCPS]	Fire-Lite	FCPS-24	Signal Zone Expander	7315-0075:176	N/A	Top of box below 6'-3"
1	[K]	Fire-Lite	LCD-40	Remote Annunciator	7165-0075:158	3 Gang	52" Above Finished Floor
6	[F]	Fire-Lite	BG-10LX	Manual Pull Station	7150-0075:103	Single Gang	48" Above Finished Floor
28	[SD]	Fire-Lite	SD300	Smoke Detector	7272-0075:172	4S w/Ring	On Ceiling
4	[H]	Fire-Lite	HD600	Heat Detector	7270-0075:168	4S w/Ring	On Ceiling
3	[R]	System Sensor	6424	Beam Smoke - Receiver	7260-1209:141	N/A	1' Below Ceiling & Obstacles
3	[T]	System Sensor	6424	Beam Smoke - Transmitter	7260-1209:141	N/A	1' Below Ceiling & Obstacles
3	[TB]	System Sensor	6424	Test Button	7260-1209:141	N/A	48" Above Finished Floor
1	[W]	N/A	N/A	Existing Waterflow	N/A	N/A	N/A
9	[M301]	Fire-Lite	M301	Mini Monitor Module	7300-0075:159	Single Gang	N/A
5	[100]	Wheelock	SR-24110-HFW	Strobe, 100 Candela, Ceiling Mount	7125-0785:133	4S w/Ring	On Ceiling
8	[100]	Wheelock	AS-24110-CFW	Horn/Strobe, 100 Candela, Ceiling Mount	7125-0785:131	4S w/Ring	On Ceiling
1	[75]	Wheelock	AS-2475-CFW	Horn/Strobe, 75 Candela, Ceiling Mount	7125-0785:131	4S w/Ring	On Ceiling
3	[75]	Wheelock	AS-2475-VFR	Horn/Strobe, 75 Candela, Wall Mount	7125-0785:131	4S w/Ring	80" Above Finished Floor
2	[15]	Wheelock	AS-2415-VFR	Horn/Strobe, 15 Candela, Wall Mount	7125-0785:131	4S w/Ring	80" Above Finished Floor
6	[15]	Wheelock	SR-2415-VFR	Strobe, 15 Candela, Wall Mount	7125-0785:133	4S w/Ring	80" Above Finished Floor
2	[DSM]	Wheelock	DSM	Synchronization Module	7300-0785:132	4S w/Ring	N/A
1	[I]	Fire-Lite	I300	Isolator Module	7300-0075:159	4S w/Ring	N/A
1	[B]	N/A	N/A	Existing Sprinkler Bell	N/A	N/A	N/A

Worksheet: SymboTable

Fire Alarm Sequence of Operations						
Reaction	Action					
	Manual Pull Station	Smoke Detector	Heat Detector	Waterflow Switch	Power Failure	System Trouble
Annunciate at Panel	Yes	Yes	Yes	Yes	Yes	Yes
Annunciate at Remote Annunciator	Yes	Yes	Yes	Yes	Yes	Yes
Sound Audible Alarm Devices	Yes	Yes	Yes	Yes	No	No
Sound Outside Sprinkler Bell	No	No	No	Yes	No	No
Activate Central Station Connection - Alarm	Yes	Yes	Yes	Yes	No	No
Activate Central Station Connection - System Trouble	No	No	No	No	Yes	Yes

Worksheet: Sequence

Panel and Devices Battery Calculations for Silent Knight MS9200							
Qty	Manufacturer	Model Number	Description	Standby Current	Total Standby	Alarm Current	Total Alarm
1	Fire-Lite	MS-9200	FACP	0.0800	0.0800	0.1680	0.1680
1	Fire-Lite	UDACT-F	Alarm Communicator Transmitter	0.0400	0.0400	0.0750	0.0750
1	Fire-Lite	LCD-40	Zone Annunciator	0.0540	0.0540	0.0540	0.0540
9	Fire-Lite	M301	Mini Monitor Module	0.0002	0.0018	0.0000	0.0000
28	Fire-Lite	SD300	Smoke Detector	0.0002	0.0056	0.0000	0.0000
4	Fire-Lite	HD600	Heat Detector	0.0002	0.0008	0.0000	0.0000
6	Fire-Lite	BG-10LX	Manual Pull Station	0.0002	0.0012	0.0000	0.0000
3	System Sensor	6424	Beam Smoke Transmitter & Receive	0.0100	0.0300	0.0283	0.0852
1	Fire-Lite	I300	Isolator Module	0.0002	0.0002	0.0000	0.0000
4	Wheelock	AS-24110-CFW	Horn/Strobe, Ceiling Mount, 100 cd	0.0000	0.0000	0.2690	1.0760
1	Wheelock	AS-2475-VFR	Horn/Strobe, Wall Mount, 75 cd	0.0000	0.0000	0.2390	0.2390
Totals					0.2136		1.6972
Panel Voltage				24	60 Hours Standby	12.8160	
Battery Voltage				12	5 Minutes Alarm	0.1414	
Battery Capacity (Amp Hours)				7	Total Capacity Used	12.9574	
Number of Batteries Used				2	Battery Capacity	17.0000	
Total Battery Capacity (AH @ Panel Voltage)				7	Spare Capacity	23.78%	

Worksheet: BattCals - 9200

Addressable Modules				Addressable Modules			
Address Number	Module Type	Description	Room or Location	Address Number	Module Type	Description	Room or Location
M-01	M301	Heat Detector	Electrical Equipment Room	D-01	SD300	Smoke Detector	Librarian Office
M-02	M301	Waterflow	Mechanical Room	D-02	SD300	Smoke Detector	Conference Room
M-03	M301	Heat Detector	Boiler Room	D-03	SD300	Smoke Detector	Mechanical Room
M-04	M301	Beam Smoke	Main Room	D-04	SD300	Smoke Detector	Room Next to Boiler Room
M-05	M301	Pull Station	Main Room	D-05	SD300	Smoke Detector	Office Next to Librarian Office
M-06	M301	Beam Smoke	Main Room	D-06	SD300	Smoke Detector	Storage Room
M-07	M301	Beam Smoke	Main Room	D-07	SD300	Smoke Detector	Storage Room
M-08	M301	Halon	2nd Flr Computer Room	D-08	SD300	Smoke Detector	Office Next to Storage
M-09	M301	Heat Detectors	2nd Flr Staff Lounge	D-09	SD300	Smoke Detector	Audio - Visual
M-10	M301	Pull Station	2nd Flr Equipment Room	D-10	SD300	Smoke Detector	Room Next to Audio - Video Room
M-11	M301	Pull Station	Children Area	D-11	SD300	Smoke Detector	2nd Flr Storage
M-12	M301	Pull Station	Main Entrance	D-12	SD300	Smoke Detector	2nd Flr Technical Services
M-13	M301	Heat Detector	2nd Flr Storage	D-13	SD300	Smoke Detector	2nd Flr Technical Services
M-14	M301	Pull Station	2nd Flr Entrance	D-14	SD300	Smoke Detector	2nd Flr NE Room of Technical Services
M-15	M301	Pull Station	2nd Flr Forum	D-15	SD300	Smoke Detector	Circulation
				D-16	SD300	Smoke Detector	SW Room of Circulation
				D-17	SD300	Smoke Detector	By Charge Desk
				D-18	SD300	Smoke Detector	Children Area
				D-19	SD300	Smoke Detector	Children Area
				D-20	SD300	Smoke Detector	Children Area
				D-21	SD300	Smoke Detector	Children Area
				D-22	SD300	Smoke Detector	2nd Flr by Stairs
				D-23	SD300	Smoke Detector	2nd Flr Forum
				D-24	SD300	Smoke Detector	2nd Flr Forum
				D-25	SD300	Smoke Detector	2nd Flr Forum
				D-26	SD300	Smoke Detector	2nd Flr Forum
				D-27	SD300	Smoke Detector	Computer Lab
				D-28	SD300	Smoke Detector	Lobby

**Revisions**

No.	Name	Date	Init.
1	For Approval	04/23/97	JVB

Worksheet: RevisionsWS  
File: 97110/FA-01 Cover Sheet.2  
Plotted: 04/30/97 5:51:30 PM

**Excel Systems & Solutions**

A Division of Excel Communications, Inc.  
568 E. Foothill Blvd., #117  
Azusa, California 91702  
FAX (818) 334-1156  
(818) 812-9544

Alarm Company License ACO # 4218  
State Contractors License # 706100  
Locksmith License LCO # 845

**Glendora Library**  
140 South Glendora Ave.  
Glendora, CA 91741

The information contained in this drawing is the property of the issuer, issued in strict confidence for a specific project and shall not be copied, reproduced or used for any other purpose except by prior written agreement with the issuer.

**Applicable Codes:**

- 1994 UPC and 1995 California Amendments (95 California Building Code - Part 2, Title 24, CCR)
- 1993 NEC and 1995 California Amendments (95 California Electrical Code - Part 3, Title 24, CCR)
- 1994 UBM and 1995 California Amendments (95 California Mechanical Code - Part 4, Title 24, CCR)
- 1994 UPC and 1995 California Amendments (95 California Plumbing Code - Part 5, Title 24, CCR)
- 1994 UFC and 1995 California Amendments (California Fire Code - Part 9, Title 24, CCR)
- 1994 Building Standards Codes (California Fire Code - Part 9, Title 24, CCR)
- 1994 Building Standards Codes (95 State-Referenced Standards Code - Part 12, Title 24, CCR)

**Applicable Standards:**

- NFPA Standards Edition
- 72 Remote Signaling Systems 1993
- Formerly 72C w/ 71 Central Station.

**Central Station:**

Monitored By: CSSS UL # S-2619 (UUFEX)

Drawn By: JVB

Checked By: *STP*

Date: 05/01/97 Δ0

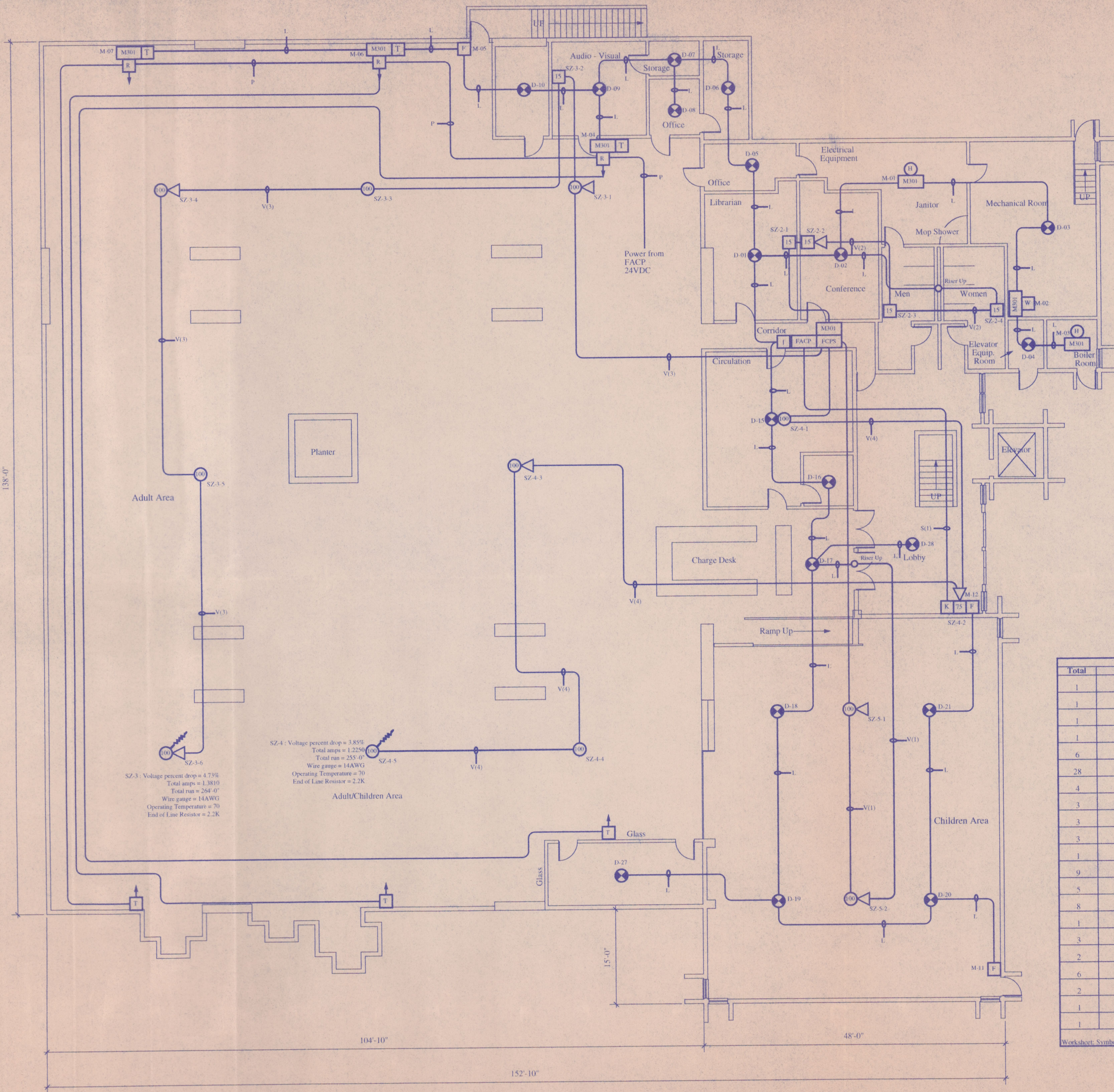
Scale: None

Job #: 97110

Cover Sheet

FA - 01

**Cover Sheet**



SZ-3: Voltage percent drop = 4.73%  
 Total amps = 1.3810  
 Total run = 264'-0"  
 Wire gauge = 14AWG  
 Operating Temperature = 70  
 End of Line Resistor = 2.2K

SZ-4: Voltage percent drop = 3.85%  
 Total amps = 1.2250  
 Total run = 255'-0"  
 Wire gauge = 14AWG  
 Operating Temperature = 70  
 End of Line Resistor = 2.2K

Wire ID	Description	Panel/Zone Origin
L	Addressable Loop	FACP/MS9200
V(5)	Signal Zone - 5	FACP/MS9200
V(2)	Signal Zone - 2	FCPS-24
V(3)	Signal Zone - 3	FCPS-24
V(4)	Signal Zone - 4	FCPS-24
S(1)	Annunciator	FACP/MS9200
P	Power for Beam Smokes	FACP/MS9200

Worksheet: Wire Description

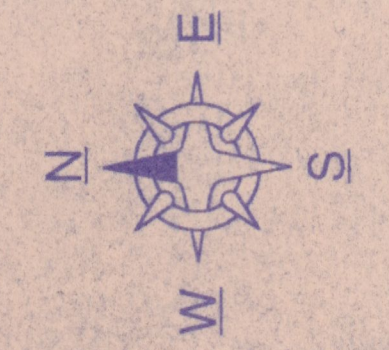
Wire Schedule		
Designation	Wire/ Cable	Circuit Type
V	14/2 Fire Wire	Strobes & Horn/Strobes
L	18/2 Fire Wire	Addressable Loop
P	18/2 Fire Wire	Power from FACP to Beam Smokes
S	18/4 Fire Wire	Annunciator

Note: All Wiring Shall Be FPL Type, Concealed In Conduit, Walls And Above Ceiling.  
 Note: Use Type "THWN" For Wet/Damp Locations.

Worksheet: Wire Schedule

Symbol Table				
Total	Symbol	Manufacturer	Model	Description
1	FACP	Fire-Lite	MS9200	Fire Alarm Control Panel
1		Fire-Lite	U-DACT	Communicator
1	FCPS	Fire-Lite	FCPS-24	Signal Zone Expander
1	K	Fire-Lite	LCD-40	Remote Annunciator
6	F	Fire-Lite	BG-10LX	Manual Pull Station
28		Fire-Lite	SD300	Smoke Detector
4	H	Fire-Lite	HD600	Heat Detector
3		System Sensor	6424	Beam Smoke - Receiver
3		System Sensor	6424	Beam Smoke - Transmitter
3	FB	System Sensor	6424	Test Button
1	W	N/A	N/A	Existing Waterflow
9	M301	Fire-Lite	M301	Mini Monitor Module
5		Wheelock	SR-24110-HFW	Strobe, 100 Candela, Ceiling Mount
8		Wheelock	AS-24110-CFW	Horn/Strobe, 100 Candela, Ceiling Mount
1	75	Wheelock	AS-2475-CFW	Strobe, 75 Candela, Ceiling Mount
3	75	Wheelock	AS-2475-VFR	Horn/Strobe, 75 Candela, Wall Mount
2	15	Wheelock	AS-2415-VFR	Horn/Strobe, 15 Candela, Wall Mount
6	15	Wheelock	SR-2415-VFR	Strobe, 15 Candela, Wall Mount
2	DSM	Wheelock	DSM	Synchronization Module
1	I	Fire-Lite	I300	Isolator Module
1	B	N/A	N/A	Existing Sprinkler Bell

Worksheet: SymbolTable



# Fire Alarm System First Floor

## Revisions

No.	Name	Date	Init.
1	For Approval	04/23/97	JVB

Worksheet: RevisionsWS  
 File: 97110/FA-02 First Floor.2  
 Plotted: 04/28/97 11:00:04 AM

## Excel Systems & Solutions

A Division of Excel Communications, Inc.  
 568 E. Foothill Blvd., #117  
 Azusa, California 91702  
 FAX (818) 334-1156  
 (818) 812-9544

Alarm Company License ACO # 4218  
 State Contractors License # 706100  
 Locksmith License LCO # 845

**Glendora Public Library**  
 140 South Glendora Ave.  
 Glendora, CA 91741

The Information contained in this drawing is the property of the issuer, issued in strict confidence for a specific project and shall not be copied, reproduced or used for any other purpose except by prior written agreement with the issuer.

Drawn By: JVB

Checked By: *SJP*

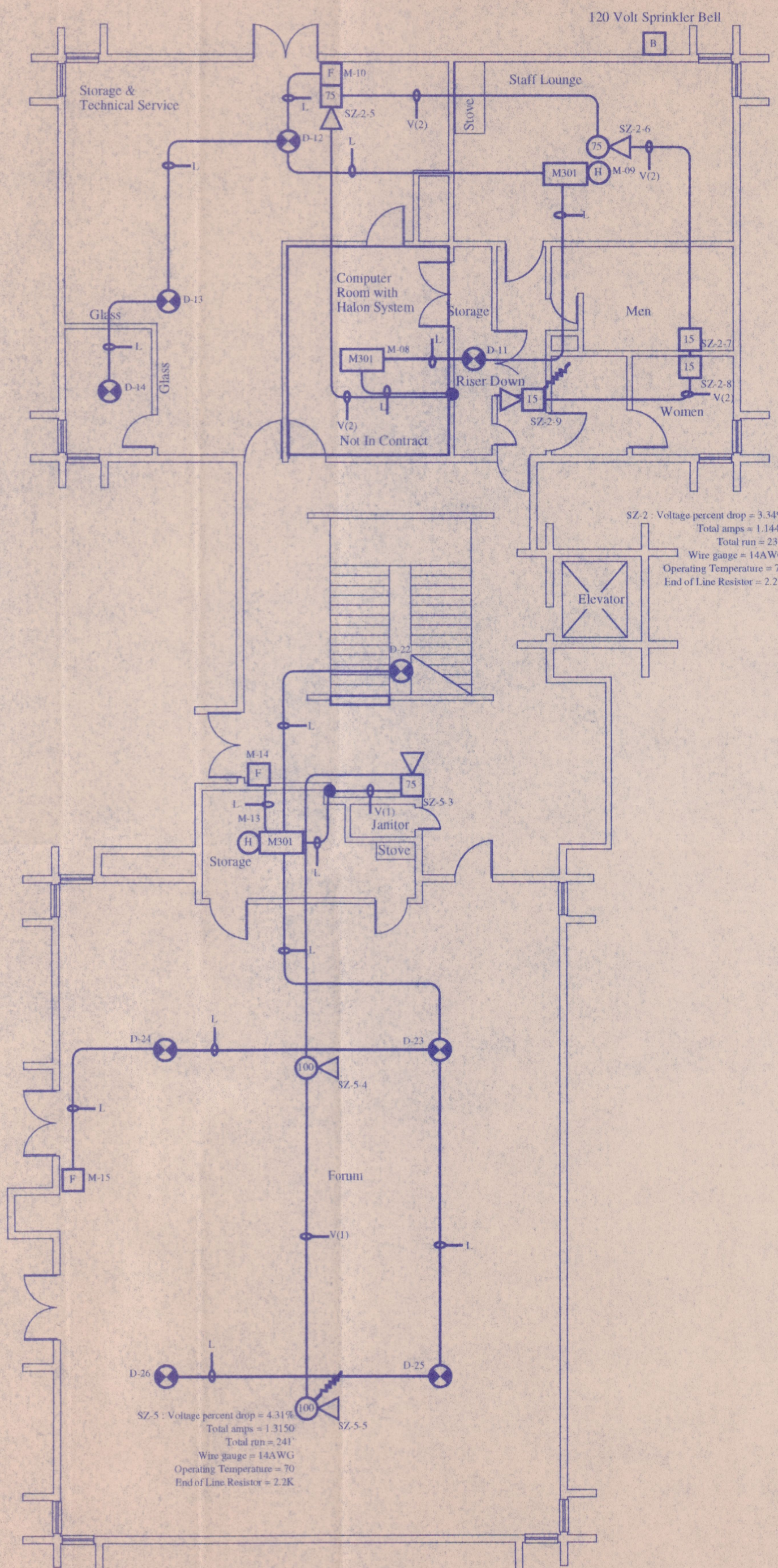
Date: 04/28/97 Δ0

Scale: 1/8"

Job #: 97110

Fire Alarm System First Floor

FA - 02



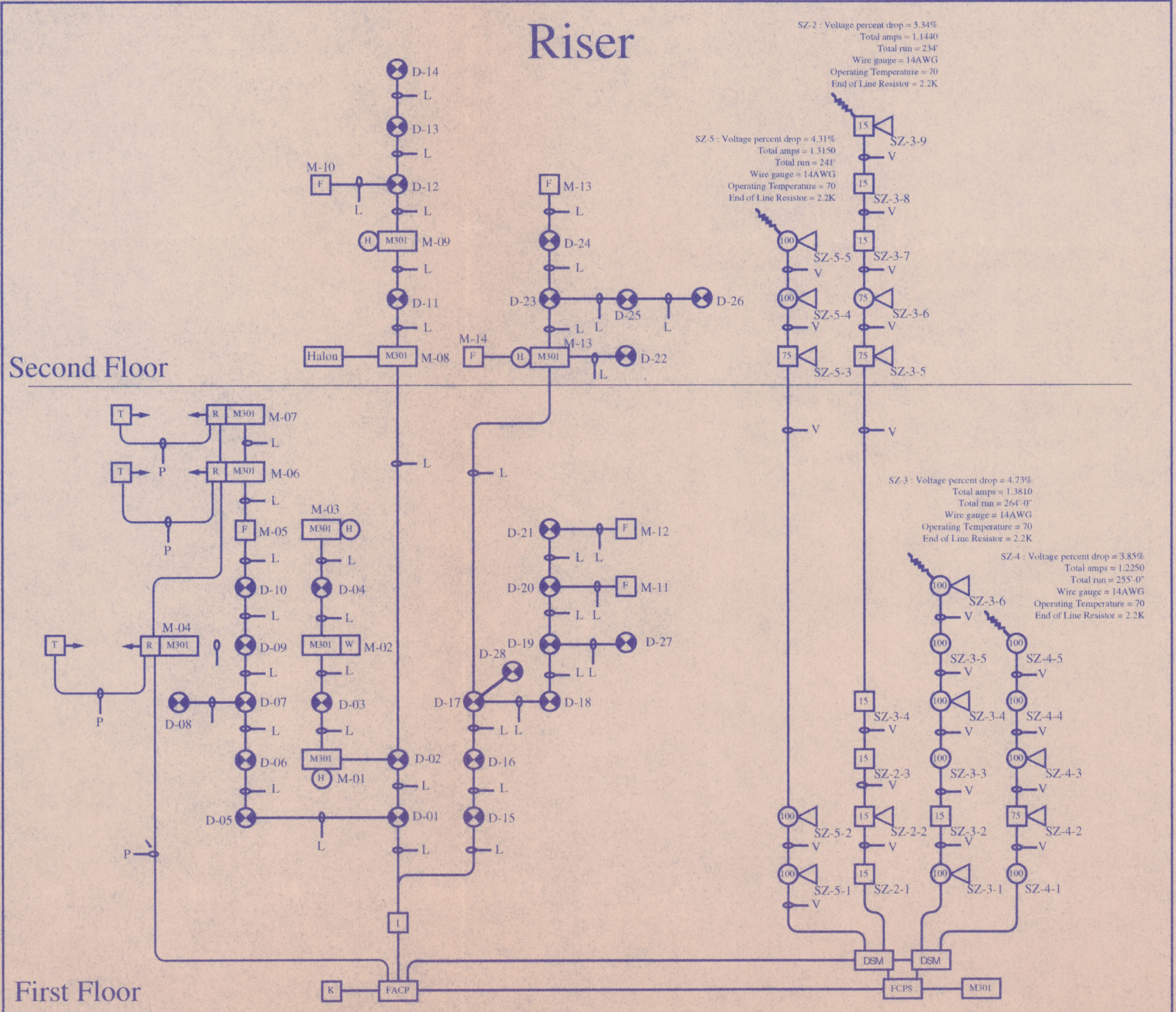
Total	Symbol	Manufacturer	Model	Description	CFM	Backbox	Mounting Height
1	FACP	Fire-Lite	MS9200	Fire Alarm Control Panel	7165-0075:158	N/A	Top of box below 6'-3"
1	FCPS	Fire-Lite	U-DACT	Communicator	7300-0075:174	N/A	N/A
1	K	Fire-Lite	FCPS-24	Signal Zone Expander	7315-0075:176	N/A	Top of box below 6'-3"
1	F	Fire-Lite	LCD-40	Remote Annunciator	7165-0075:158	3 Gang	Top of box below 52"
6	M-10	Fire-Lite	BG-10LX	Manual Pull Station	7150-0075:103	Single Gang	48" Above Finished Floor
28	SD	Fire-Lite	SD300	Smoke Detector	7272-0075:172	4S w/Ring	On Ceiling
4	HD	Fire-Lite	HD600	Heat Detector	7270-0075:168	4S w/Ring	On Ceiling
3	R	System Sensor	6424	Beam Smoke - Receiver	7260-1209:141	N/A	1' below Obstacles
3	T	System Sensor	6424	Beam Smoke - Transmitter	7260-1209:141	N/A	1' below Obstacles
3	TB	System Sensor	6424	Test Button	7260-1209:141	N/A	48" Above Finished Floor
1	W	N/A	N/A	Existing Waterflow	N/A	N/A	N/A
9	M301	Fire-Lite	M301	Mini Monitor Module	7300-0075:159	Single Gang	N/A
5	100	Wheelock	SR-24110-HFW	Strobe, 100 Candela, Ceiling Mount	7125-0785:133	4S w/Ring	On Ceiling
8	100	Wheelock	AS-24110-CFW	Horn/Strobe, 100 Candela, Ceiling Mount	7125-0785:131	4S w/Ring	On Ceiling
1	75	Wheelock	AS-2475-CFW	Horn/Strobe, 75 Candela, Ceiling Mount	7125-0785:131	4S w/Ring	On Ceiling
3	75	Wheelock	AS-2475-VFR	Horn/Strobe, 75 Candela, Wall Mount	7125-0785:131	4S w/Ring	80" Above Finished Floor
2	15	Wheelock	AS-2415-VFR	Horn/Strobe, 15 Candela, Wall Mount	7125-0785:131	4S w/Ring	80" Above Finished Floor
6	15	Wheelock	SR-2415-VFR	Strobe, 15 Candela, Wall Mount	7125-0785:133	4S w/Ring	80" Above Finished Floor
2	DSM	Wheelock	DSM	Synchronization Module	7300-0785:132	4S w/Ring	N/A
1	I	Fire-Lite	I300	Isolator Module	7300-0075:159	4S w/Ring	N/A
1	B	N/A	N/A	Existing Sprinkler Bell	N/A	N/A	N/A

Wire Schedule		
Designation	Wire/Cable	Circuit Type
V	14/2 Fire Wire	Strobes & Horn/Strobes
L	18/2 Fire Wire	Addressable Loop
P	18/2 Fire Wire	Power from FACP to Beam Smokes
S	18/4 Fire Wire	Annunciator

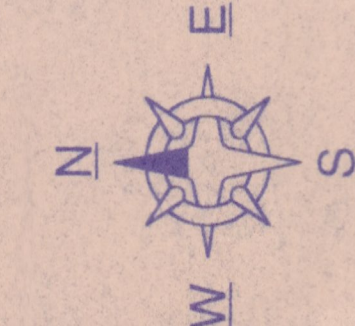
Note: All Wiring Shall Be PPL Type, Concealed In Conduit, Walls And Above Ceiling.  
Note: Use Type "THWN" For Wet/Damp Locations.

Wire ID	Description	Panel/Zone Origin
L	Addressable Loop	FACP/MS9200
V(5)	Signal Zone - 5	FACP/MS9200
V(2)	Signal Zone - 2	FCPS-24
V(3)	Signal Zone - 3	FCPS-24
V(4)	Signal Zone - 4	FCPS-24
S(1)	Annunciator	FACP/MS9200
P	Power for Beam Smokes	FACP/MS9200

Worksheet: SymbolTable



# Fire Alarm System Second Floor



## Revisions

No.	Name	Date	Init.
1	For Approval	04/23/97	JVB

## Excel Systems & Solutions

A Division of Excel Communications, Inc.  
568 E. Foothill Blvd., #117  
Azusa, California 91702  
FAX (818) 334-1156  
(818) 812-9544

Alarm Company License ACO # 4218  
State Contractors License # 706100  
Locksmith License LCO # 845

**Glendora Public Library**  
140 South Glendora Ave.  
Glendora, CA 91741

The Information contained in this drawing is the property of the issuer, issued in strict confidence for a specific project and shall not be copied, reproduced or used for any other purpose except by prior written agreement with the issuer.

Drawn By: JVB

Checked By: *507*

Date: 05/01/97 Δ0

Scale: 1/8"

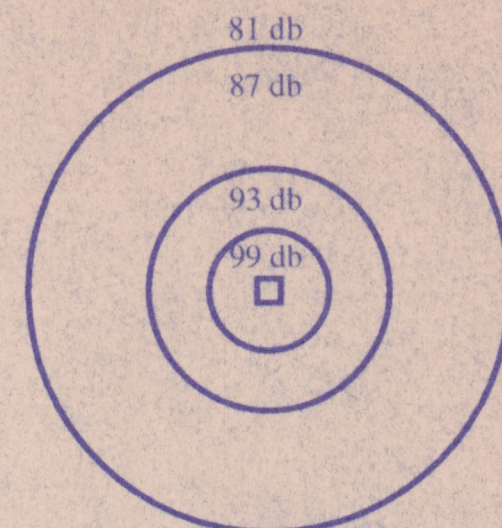
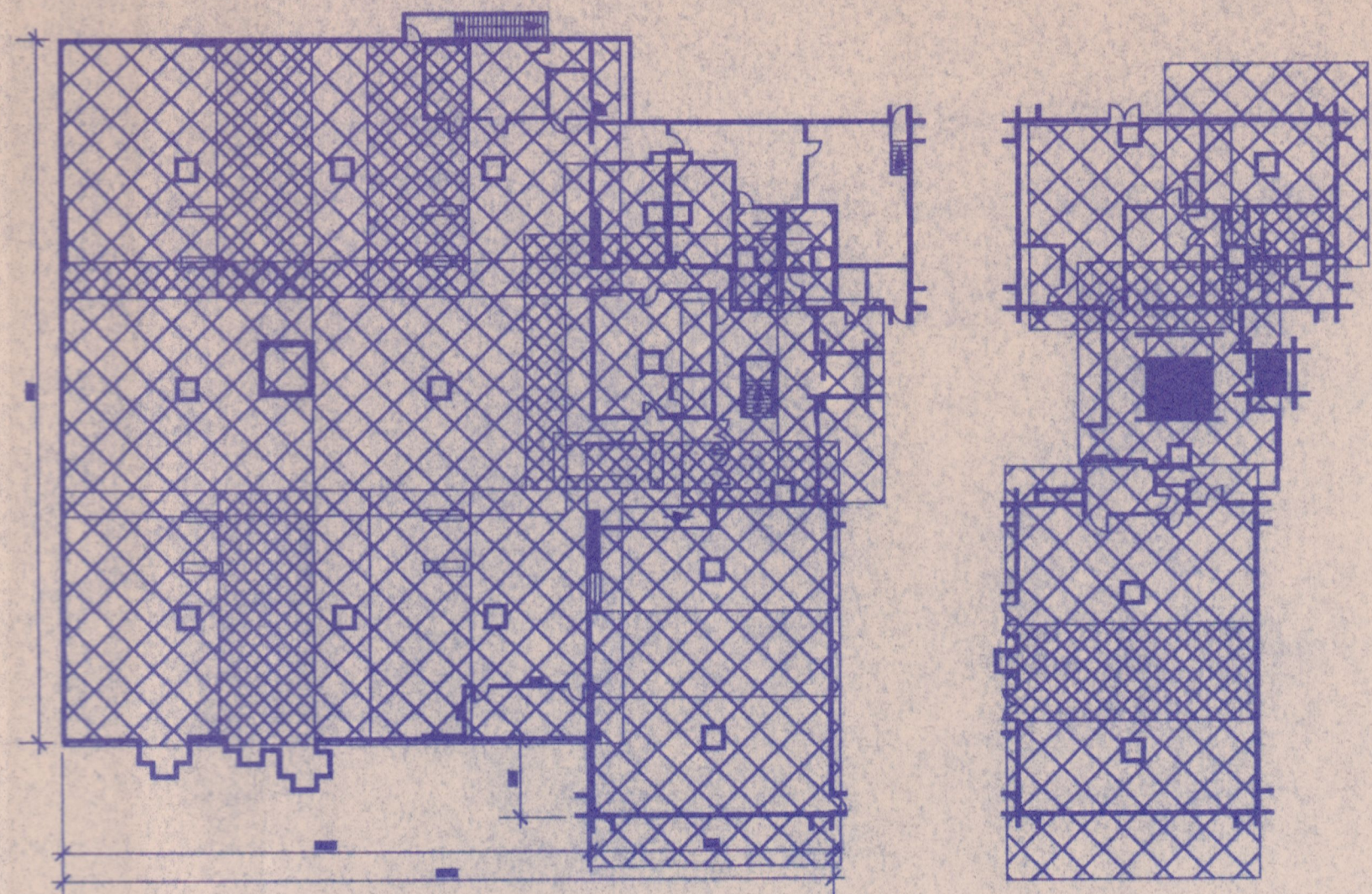
Job #: 97110

Fire Alarm System Second Floor

FA - 03

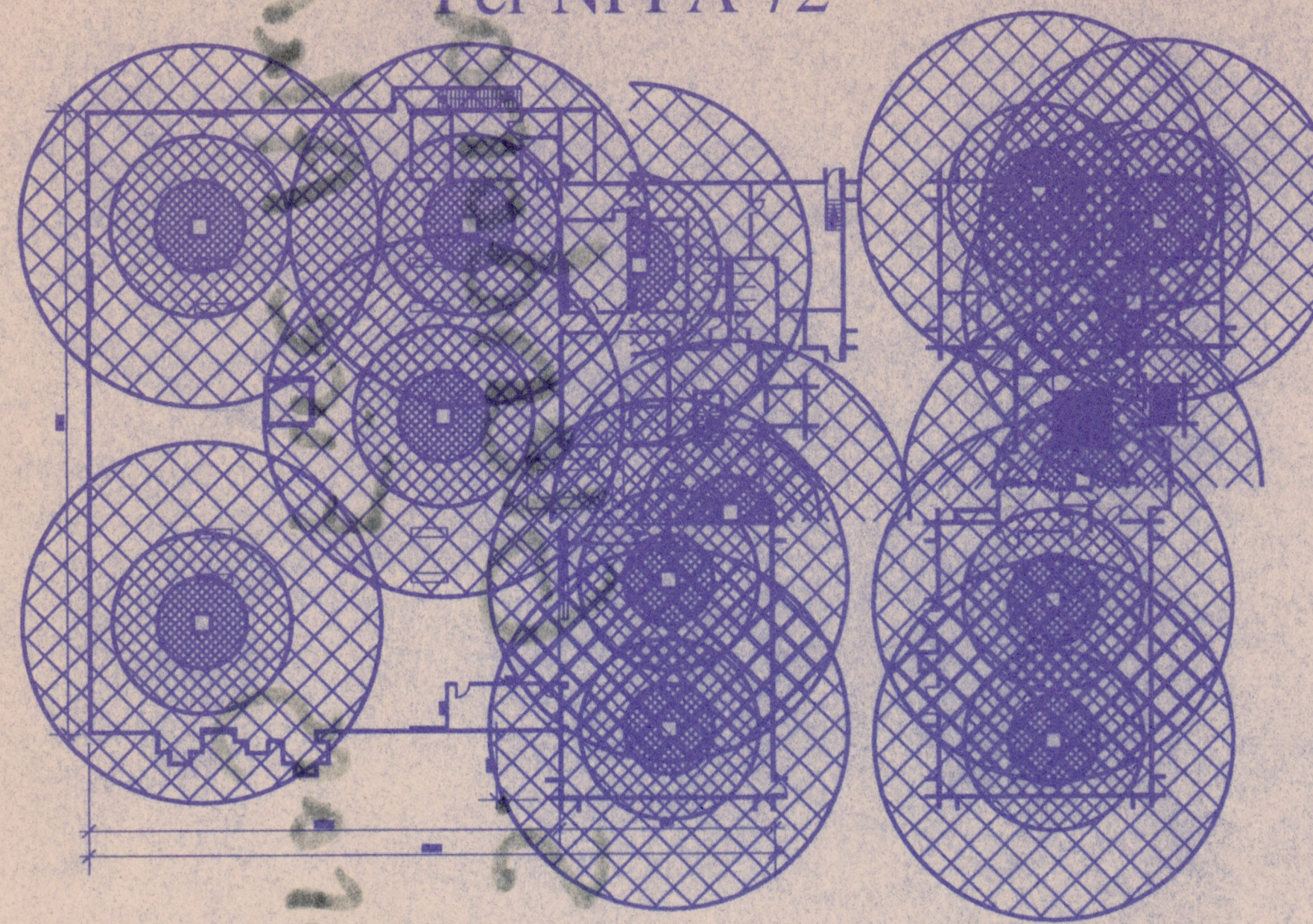


**Strobe Coverage Area  
Per NFPA 72**

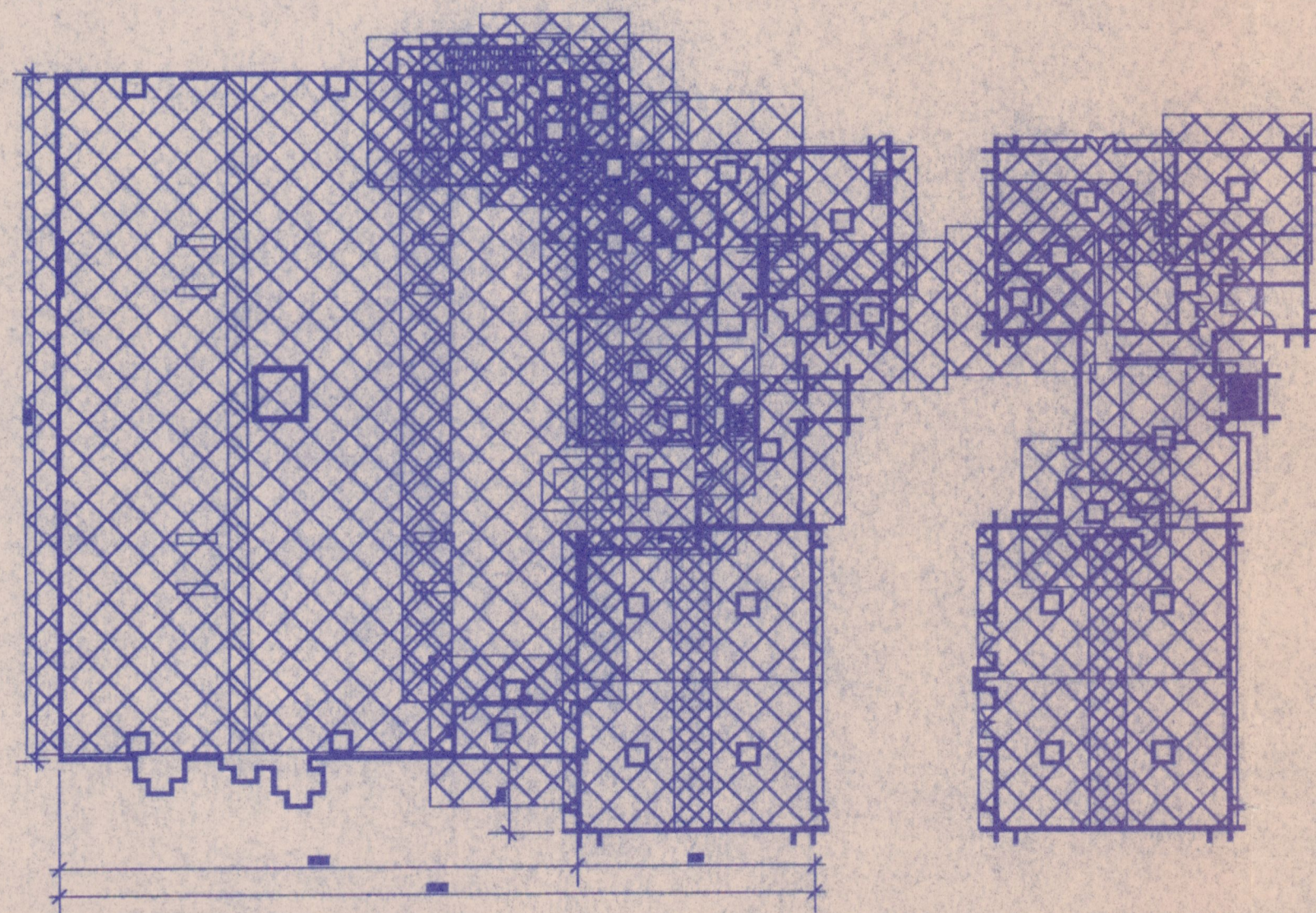


When doubling the radius, the audibility is decreased by 6 db. The 'Average Ambient Sound Level' is rated at 55 db for places of assembly (NFPA 72 6.3.1).

**Horn Coverage Area  
Per NFPA 72**

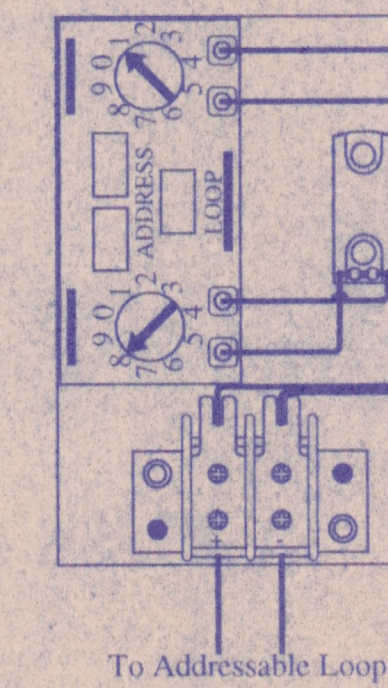
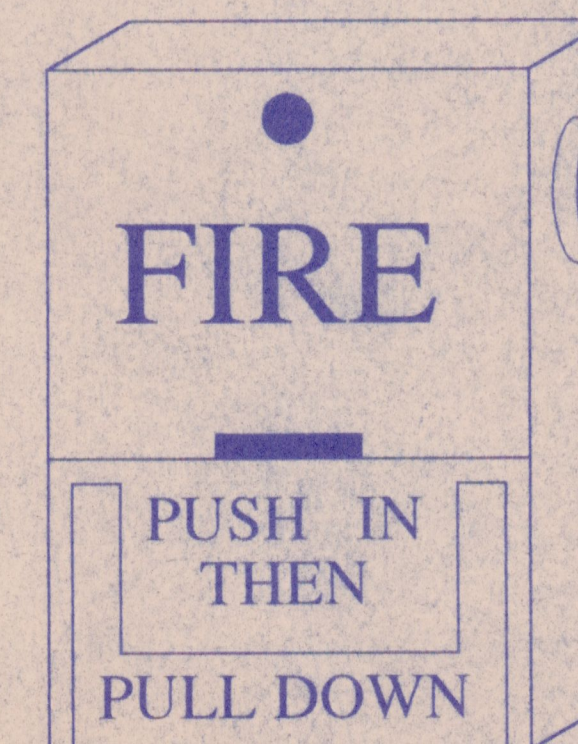


**Smoke/ Heat Coverage Area  
Per NFPA 72**



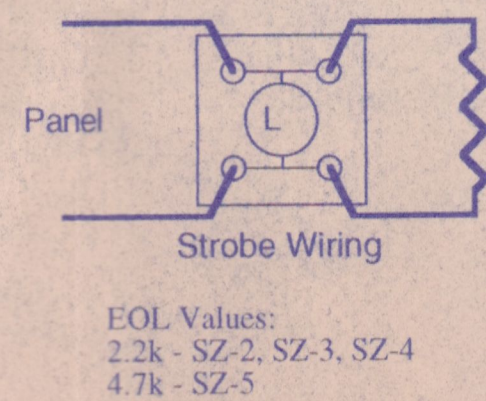
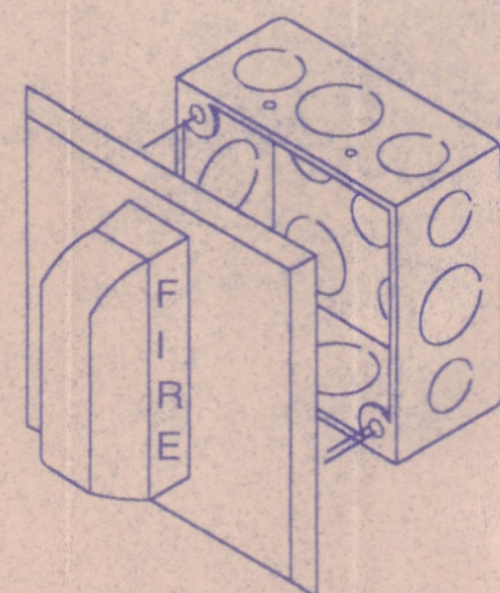
**Manual Pull Station**

Fire-Lite: BG-10LX  
CFM# 7150-0075:103



**Synchronized Strobes**

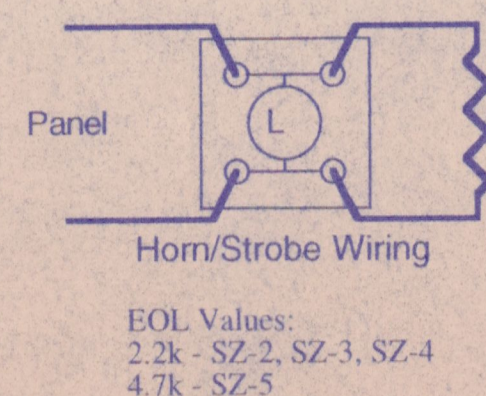
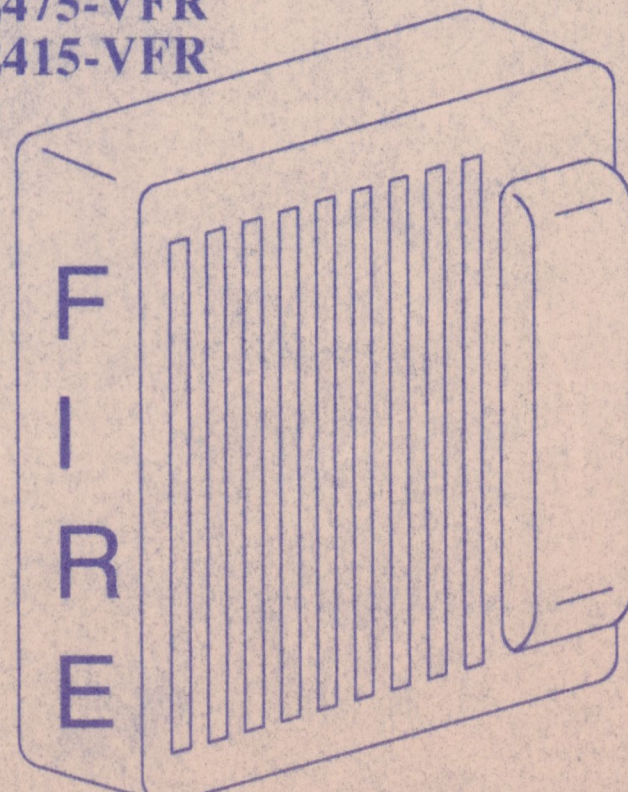
Wheelock (Ceiling Mount): SR-24110-HFW  
Wheelock (Wall Mount): SR-2415-VFR  
CFM# 7125-1785:133



EOL Values:  
2.2k - SZ-2, SZ-3, SZ-4  
4.7k - SZ-5

**Synchronized Horn/Strobes**

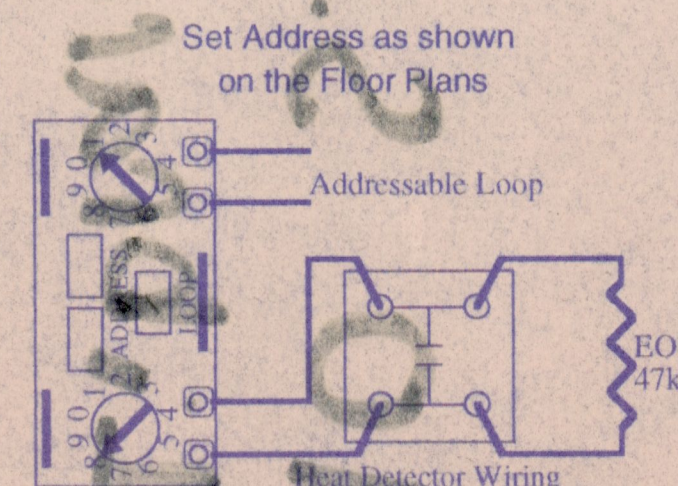
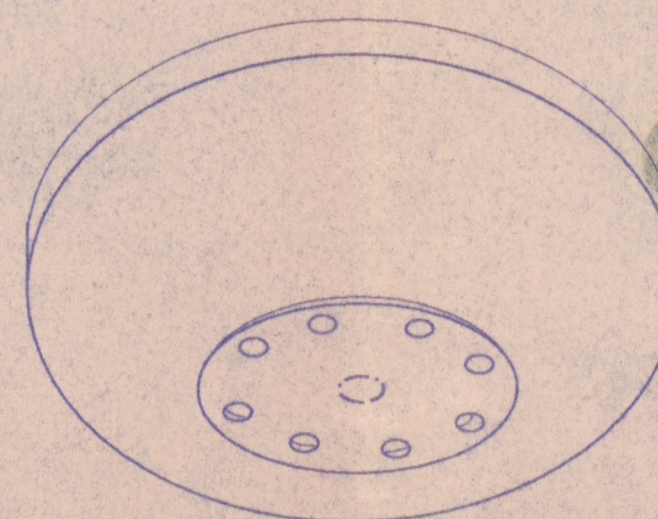
Wheelock (Ceiling Mount): AS-24110-CFW  
Wheelock (Ceiling Mount): AS-2475-CFW  
Wheelock (Wall Mount): AS-2475-VFR  
Wheelock (Wall Mount): AS-2415-VFR  
CFM# 7125-0785:131



EOL Values:  
2.2k - SZ-2, SZ-3, SZ-4  
4.7k - SZ-5

**Heat Detector**

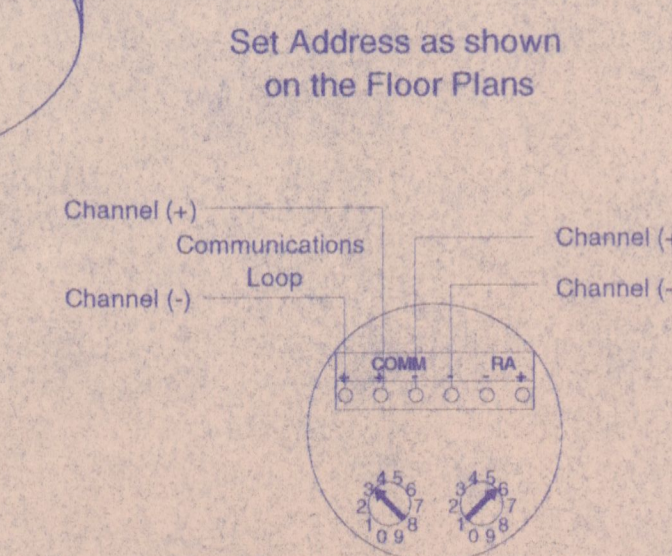
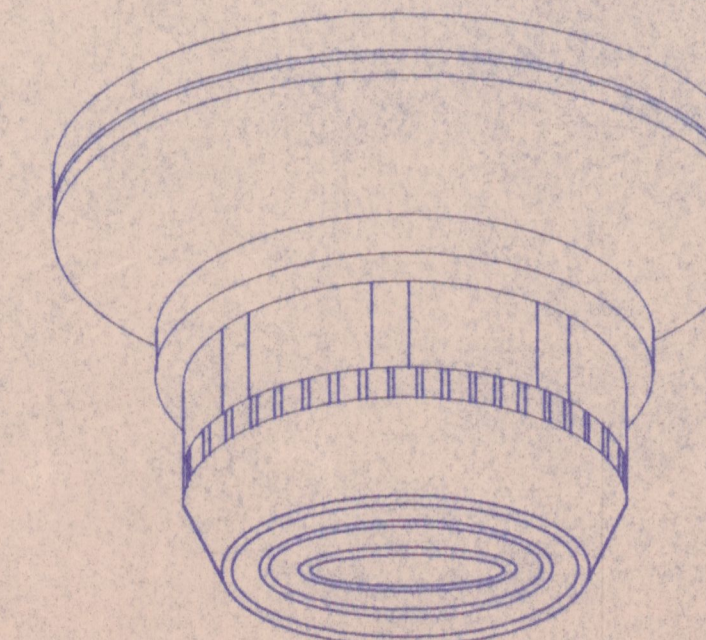
Fire-Lite: HD-600  
CFM# 7270-0075:168



Set Address as shown on the Floor Plans

**Smoke Detector**

Fire-Lite: SD300  
CFM# 7272-0075:172



Set Address as shown on the Floor Plans

**Device Details and Coverage Area**

**Revisions**

No.	Name	Date	Init.
1	For Approval	04/23/97	JVB

Worksheet: RevisionsWS

File: 97110/FA-05 Details & Coverage  
Plotted: 4/30/97 5:46:09 PM

**Excel Systems & Solutions**

A Division of Excel Communications, Inc.  
568 E. Foothill Blvd., #117  
Azusa, California 91702  
FAX (818) 334-1156  
(818) 812-9544

Alarm Company License ACO # 4218  
State Contractors License # 706100  
Locksmith License LCO # 845

**Glendora Library**  
140 South Glendora Ave.  
Glendora, CA 91741

The Information contained in this drawing is the property of the issuer, issued in strict confidence for a specific project and shall not be copied, reproduced or used for any other purpose except by prior written agreement with the issuer.

Drawn By: JVB

Checked By: STP

Date: 05/01/97 Δ0

Scale: None

Job #: 97110

Device Details  
and  
Coverage Area

FA - 05

140 S. Glendora Ave - Library Fire Alarms

FIRE ALARMS

140 S. GLENDORA

140 S. Glendora  
Library Fire Alarms

140 S. Glendora  
Library Fire Alarms

140 S. Glendora Ave

B-SCAN-138